



## Linnet Mansion, 2a Linnet Lane, Liverpool

£800 PCM

Video Tour Available

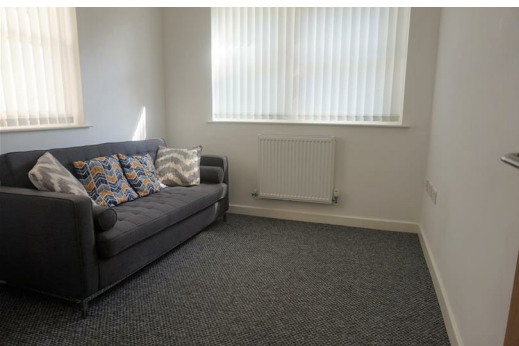
Situated just a stone's throw away from Aigburth, which was named as one of the Sunday Times' best city-living spots, this brand-new apartment is located in a prime Liverpool location.

Inside this charming 1 bedroom property, you'll find a fresh and modern interior as a result of the recent renovations. It's fully furnished too, so you could drop your bags and move straight in. Inside you'll find plush carpets underfoot, leading from the spacious hallway into the bright open-plan kitchen/lounge. The kitchen benefits from an ultra-modern, high-gloss finish and the bathroom features a sleek, neutral design throughout.

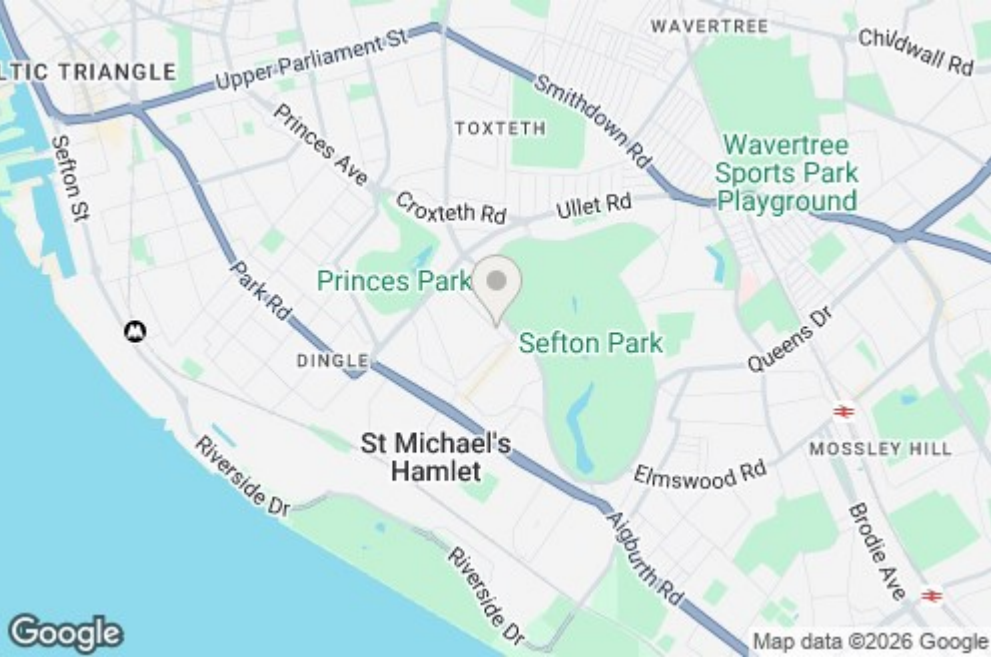
This apartment is perfect for both working professionals and students. There's plenty of cracking transport connections close by, including several bus connections (with a bus stop practically outside your door) and St Michael's train station just a short stroll away. Travelling to Liverpool and the University is an absolute breeze. As an added bonus there's plenty of off-road parking available too.

Due to the ideal location, we guarantee this property won't be around for long, and just so you know, the pictures for this apartment are for marketing purposes only. The internal fixtures, fittings and furnishings may vary.

\*Available 11th February 2026\* 12 month tenancy. Council Tax Band A. Deposit £920.



7 Linnet Mansion 2a Linnet Lane, Sefton Park, Liverpool, Merseyside, L17 3BG



Energy Efficiency Rating		Score	Band
Very energy efficient - lower running costs			
92-100	A		
81-91	B		
69-80	C		
55-68	D		
44-54	E		
35-43	F		
2-34	G		
Not energy efficient - higher running costs			
		51	G1

Environmental Impact (CO <sub>2</sub> ) Rating		Score	Band
Very environmentally friendly - lower CO <sub>2</sub> emissions			
92-100	A		
81-91	B		
69-80	C		
55-68	D		
44-54	E		
35-43	F		
2-34	G		
Not environmentally friendly - higher CO <sub>2</sub> emissions			
		46	G2